



3D SERIES

GENERAL FEATURES

3D SERIES is the new EBARA range of close coupled pumps (3D) and standardized pumps manufactured according to EN733 (3DS-3DP) with cast iron body and AISI 304 or AISI 316 stainless steel impeller.

3D, 3DS and 3DP pumps represent a versatile range suitable for a lot of applications and offer significant advantages in terms of reliability, efficiency and cost saving.

The pumps are "Back pull-out" design: the motor, the coupling, the support and the impeller can be removed without disconnecting the pump body from the pipes.

- Available with 50Hz (2 and 4 poles) and 60Hz (2 poles)
- Perfectly interchangeable with the stamped steel 3 SERIES version
- High energy efficiency up to 85% thanks to the impeller and new volute: MEI > 0.4
- Cast iron pump body EN-GJL-250-EN 1561
- Mechanical seal conforming to EN12756 (ex DIN 24960)
- AISI 304 stainless steel impeller, stamped and welded with laser technology, for sizes 32, 40 and 50; AISI 316 microcasted steel for all size 65 versions

APPLICATIONS

Handling of water and clean, chemically non-aggressive liquids.
Water supply - Boosting system

Washing plants - Industry

Water circulation in climate control systems

Irrigation - Agriculture

TWO PUMPS IN ONE

3D



3M

3DS



3S

3DP

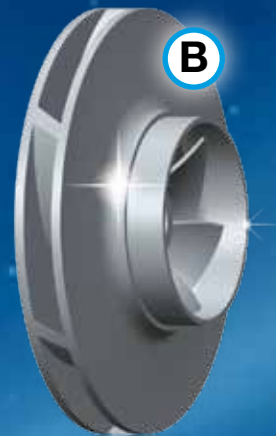
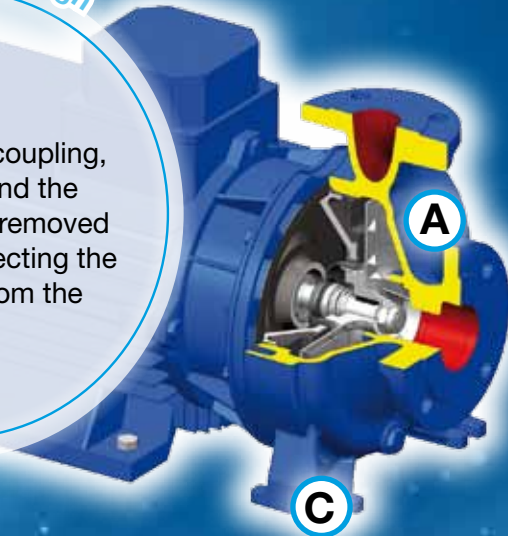


3P

3D SERIES

Back-pull-out design

The motor, the coupling, the support and the impeller can be removed without disconnecting the pump body from the pipes.



Pump Body:

- High resistant to pipe stresses, thanks to its cast iron structure with integrated support feet
- High accurate design to reduce pressure losses
- Perfectly interchangeable with the 3 SERIES stamped steel body

Impeller:

- Made of stainless steel, with high hydraulic efficiency and excellent NPSH value
- Hydraulically balanced to prevent axial thrust towards the seal
- Efficiency level exceeding 85% for size 65 pumps

Support structure:

- Reinforced to withstand forces and stresses of the plant

Motors:

- IE2
- IE3 from 7,5kW up to 22kW

EBARA introduces the 3D SERIES cast iron range which is perfectly interchangeable with the 3 SERIES steel range. The stainless steel hydraulic section and the motor are manufactured according to EBARA's rigorous standards and are the same on both product versions.

This allows significant advantages to both the end user and the installer, as you can transform the product based on the application simply purchasing the pump body and keeping intact the extraordinary performances of the stainless steel hydraulics.

Moreover, the complete 3D SERIES and 3 SERIES ranges can be customized with different mechanical seals and motors.

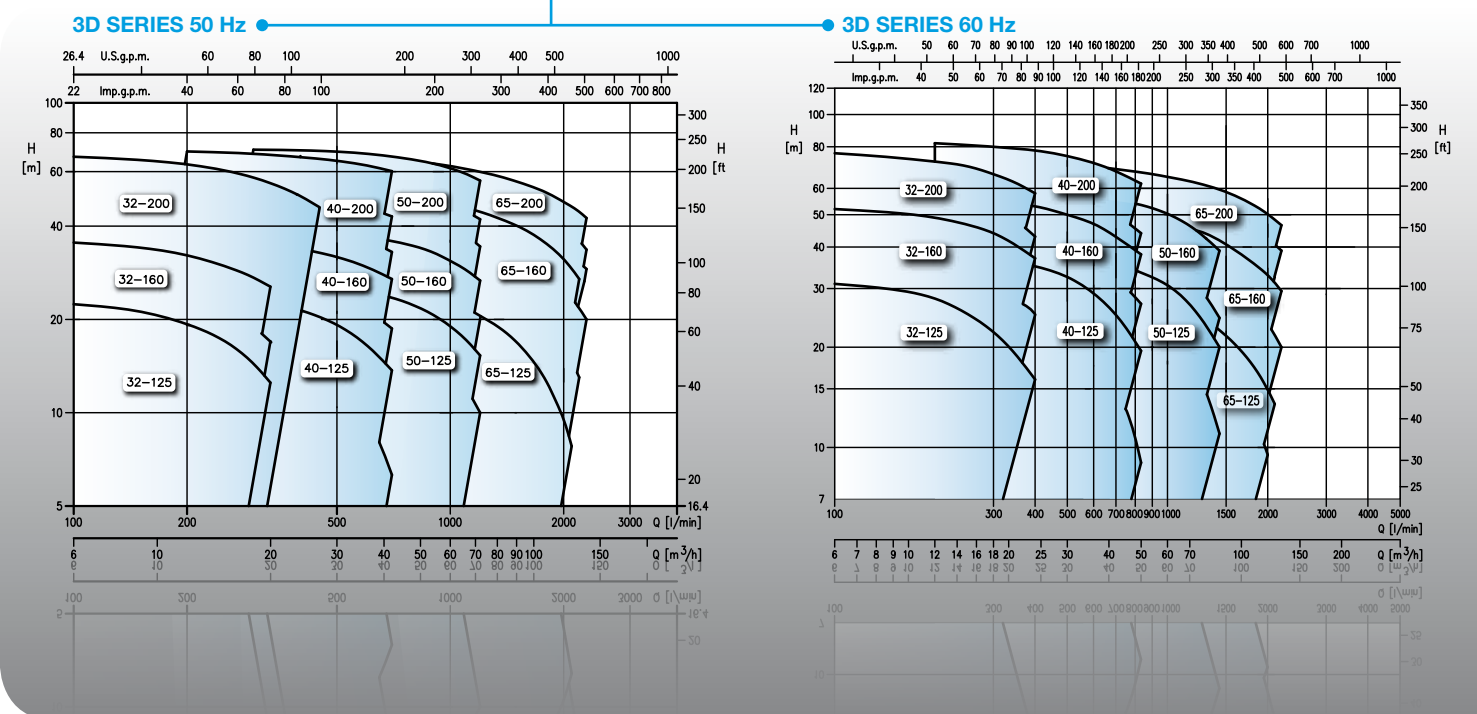
PUMP

- 50Hz version:
Flow rate up to 138 m³/h
Head up to 71 m
- 60Hz version:
Flow rate up to 132 m³/h
Head up to 83 m
- Temperature of the pumped liquid:
from -5°C to +90°C for the standard version
from -5°C to +110°C for the H-HS-HW-HSW versions
from -5°C to +120°C for the E version
- Maximum operating pressure: 10 bar (PN 10)
- Cast iron pump body EN-GJL-250-EN 1561
- Mechanical seal conforming to EN12756 (ex DIN 24960)
- 3DP SERIES available in the bare shaft version (3DPF)

MOTOR

- Standard IE2 motors according to Regulation (CE) no. 640/2009 and IEC 60034-30; IE3 on request
 - Protection rating: IP55
 - Insulation class: F
- Performances according to EN 60034-1
 - Continuous operation

PERFORMANCE RANGE:



3D SERIES CENTRIFUGAL PUMPS CLOSE COUPLED AND STANDARDIZED EN733

50/60 Hz

3D SERIES



EBARA Pumps Europe network

HEAD OFFICE

EBARA Pumps Europe S.p.A.
Via Pacinotti, 32
36040 Brendola (VI), Italy
Phone +39 0444 706811 - Fax +39 0444 405811

Italian Sales (for order only):
e-mail: ordini@ebaraeurope.com

Export Sales (for order only):
e-mail: exportsales@ebaraeurope.com

Technical Customer Service (TCS):
e-mail: technical_customer_service@ebaraeurope.com
Phone +39 0444 706869/902/923

Marketing & Marketing Communication:
e-mail: marketing@ebaraeurope.com

ITALIAN SALES NETWORK

NORTH-EAST Region:
(Trentino Alto Adige, Veneto, Friuli Venezia Giulia, Emilia Romagna)
Regional Manager mobile: +39 335 6423308
e-mail: nord@ebaraeurope.com
Phone +39 0444 706811 - Fax +39 0444 405811

NORTH-WEST Region:
(Valle d'Aosta, Piemonte, Lombardia, Liguria)
Regional Manager mobile: +39 335 5327276
e-mail: nrtgm@ebaraeurope.com
Phone +39 0444 706811 - Fax +39 0444 405975

CENTRAL Region:
(Toscana, Umbria, Marche, Lazio, Abruzzo, Molise)
Regional Manager mobile: +39 335 6423286
e-mail: centro@ebaraeurope.com
Phone +39 0444 706811 - Fax +39 0444 405811

SOUTH Region:
(Campania, Basilicata, Puglia, Calabria, Sicilia)
Regional Manager mobile: +39 335 6423316
e-mail: sud@ebaraeurope.com
Phone +39 0444 706811 - Fax +39 0444 405811

INDUSTRIAL Division:
Manager mobile: +39 335 6423302
e-mail: industry@ebaraeurope.com
Phone +39 0444 706811 - Fax +39 0444 405811

WASTEWATER Division:
Manager mobile: +39 335 6423290
e-mail: ses@ebaraeurope.com
Phone +39 0444 706811 - Fax +39 0444 405811

CAGLIARI Branch:
Via del Fangano, 29
09122 Cagliari
Phone +39 070 274281 - Fax +39 0444 405960
Branch Manager mobile: +39 335 6423320
e-mail: mktgca@ebaraeurope.com

PALERMO Branch:
Via Don L. Sturzo, 181/183
Z.I. - 90044 Carini (PA)
Phone +39 091 9668790 - Fax +39 0444 405980
Branch Manager mobile: +39 335 6423316
e-mail: mktgpa@ebaraeurope.com

EXPORT NETWORK

EBARA Pumps Europe S.p.A. UNITED KINGDOM
Unit 7 - Zodiac Business Park
High Road - Cowley Uxbridge
Middlesex - UB8 2DU, United Kingdom
Phone +44 1895 439027 - Fax +44 1895 439028
e-mail: mktguk@ebaraeurope.com

EBARA ESPAÑA BOMBAS S.A.
C/Cormoranes 6 Y 8
Polígono Ind. La Estación
28320 Pinto (Madrid), Spain
Phone +34 916.923.630 - Fax +34 916.910.818
e-mail: marketing@ebara.es

EBARA Pumps Europe S.p.A. FRANCE
555, Rue Juliette Recamier
69970 Chaponnay, France
Phone +33 4 72769462 - Fax +33 805101071
e-mail: mktgf@ebaraeurope.com

EBARA Pumps Europe S.p.A. GERMANY
Ferdinand-Porsche-Ring 7
63110 Rodgau-Jügesheim, Germany
Phone +49 (0) 6106-660 99-0
Fax +49 (0) 6106-660 99-45
e-mail: mktgd@ebaraeurope.com

EBARA POMPY POLSKA Sp. z o.o.
ul. Działkowa 115
02-234 Warszawa, Poland
Phone +48 22 3909920 - Fax +48 22 3909929
e-mail: mktgpl@ebaraeurope.com

EBARA Pumps Europe S.p.A. MIDDLE EAST
P.O. Box 54515
Dubai Airport Free Zone
Dubai, United Arab Emirates
Phone +971 4 609 1040 - Fax +971 4 609 1038
e-mail: mktgme@ebaraeurope.com

EBARA Pumps Europe S.p.A. SAUDI ARABIA
Phone +966 11 810 4561
Fax +966 11 810 4562

EBARA Pumps Europe S.p.A. INDIA LIAISON OFFICE
1503, Brumira, Coimbatore
Sector-18, Palm Beach Rd.
Sanpada, Navi Mumbai
Maharashtra, Pin: 400705 - India
Phone +91 22 2781 2862
Fax +91 22 2781 2865
e-mail: mktgind@ebaraeurope.com

EBARA Pumps Europe S.p.A. RUSSIA
Phone +7 985 7672672
e-mail: mktgrus@ebaraeurope.com

The contents of this publication should not be considered binding. EBARA Pumps Europe S.p.A. reserves the right to make changes considered appropriate without prior notice.

Cod. 47970504 09/13



EBARA Pumps Europe S.p.A.
Via Pacinotti, 32
36040 Brendola (Vicenza), Italy
Phone +39 0444 706811 - Fax +39 0444 405811
e-mail: marketing@ebaraeurope.com
www.ebaraeurope.com



EBARA Corporation
11-1, Haneda Asahi-cho, Ohta-ku,
Tokyo 144-8510
Japan
Phone +81 3 6275 7598 - Fax +81 3 5736 3193
www.ebara.com

