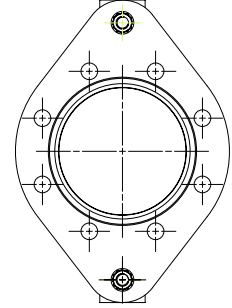
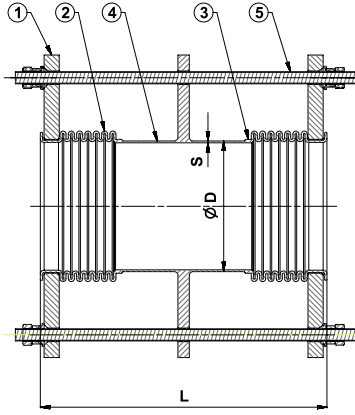


T-2410 / T-2420 / T-2430 / T-2440 / T-2450 / T-2460 / T-2470 / T-2480



### Genel Özellikler / General Specifications

Çalışma Sıcaklık Aralığı / Working Temperature : -80 ... +420°C (16 Bar)

Genleşme Miktarı

**DN 25 - 50**  
T-2410 Movement Eksenal (Axial) X=30mm, Yanal(Lateral) Y= ±25mm (50)  
T-2420 Movement Eksenal (Axial) X=30mm, Yanal(Lateral) Y= ±50mm (100)  
T-2430 Movement Eksenal (Axial) X=30mm, Yanal(Lateral) Y= ±75mm (150)  
T-2440 Movement Eksenal (Axial) X=30mm, Yanal(Lateral) Y= ±100mm (200)

**DN 65 - 250**  
T-2450 Movement Eksenal(Axial) X=60mm, Yanal (Lateral) Y= ±25mm (50)  
T-2460 Movement Eksenal(Axial) X=60mm, Yanal (Lateral) Y= ±50mm (100)  
T-2470 Movement Eksenal(Axial) X=60mm, Yanal (Lateral) Y= ±75mm (150)  
T-2480 Movement Eksenal(Axial) X=60mm, Yanal (Lateral) Y= ±100mm (200)

### Standartlar / Standards

Sertifikalar / Certificates :

Tasarım / Design : TS 10880

Bağlantı Boyutları / Connection Dimensions : TS EN 1092-1 (PN 16)

Testler / Tests : TS EN 12266-1

### Uygulamalar / Applications

Sıcak ve soğuk su sistemleri, basınçlı hava, kızgın su, buhar, kızgın buhar, kızgın yağ sistemleri  
Hot and cold water systems, compressed air, superheated water, steam, superheated steam systems, superheated oil systems

Malzeme Özellikleri / Material Specifications	No	Parça Adı / Part Name	Malzeme / Material
	1	Flanş / Flange	St37 - Çelik / Steel
	2	Körük / Bellow	X5CrNi18 10 - AISI304 - Paslanmaz Çelik / Stainless Steel
	3	Bant / Band	X5CrNi18 10 - AISI304 - Paslanmaz Çelik / Stainless Steel
	4	Ara Boru / Intermediate Pipe	St37 - Çelik / Steel
	5	Limit Rot / Limit Rod	St37 - Çelik / Steel

Ölçüler / Dimensions	Anma Basıncı / Nominal Pressure		16 Bar																														
	Anma Çapı / Nominal Diameter	X = Eksenal Hareket / Axial Movement	Y = Yanal Hareket / Lateral Movement	Z = Açısal Hareket / Angular Movement	DN	25		32		40		50		65		80		100		125		150		200		250							
						S	2,3	2,6	3	3,2	3,6	4	4,5	6,3	7,1																		
T-2410	30	±25mm (50)	L	L	L	520	530	580																									
						620	630	680																									
						720	730	780																									
						820	830	880																									
	60	±25mm (50)	L	L	L	L									590	630	680	750	820														
															690	730	850	920	1000														
															790	830	950	1020	1100														
															890	930	1050	1120	1200														
Vana Boyutları / Valve Dimensions (mm)					S	2,3	2,6	3						3,2	3,6	4	4,5	6,3	7,1														